



COMPANY PROFILE



DESIGN



MANUFACTURING



DELIVERY

CMA, ABOUT US

CMAlifts' headquarters: BARI Corato - Italy



An ambitious and far-sighted view started by the brothers Giulio and Gaetano Caputo led to the setting up of CMAlifts on 3rd January 2001. They had simply thought of something which had not been there before: a company completely devoted to the customer emphasizing the quality of their achievements.

Through this simple formula, CMAlifts, as a matter of fact, has become the leading company in the design, manufacturing and assembling of lifts and elevators for civil and industrial use.

Throughout the years, the market size in which CMAlifts has been operating has exponentially grown, which demanded a carefully planned business development strategy that led to the recent 2016 inaugural ceremony of the futuristic new company headquarters furnished with high technology equipment.

Since 2010, CMAlifts has rolled out new offices in Italy, thus expanding their business influence in Rome, Naples, Palermo and Milan. CMAlifts' constant attendance at the most important trade fairs of its sector, has enhanced the group's strength, giving the company more visibility at international level. A real industrial enterprise with the heart of a craftsman, CMAlifts has kept its focus on blending revolutionary hi-tech solutions with the excellence and expertise of their personnel's skills.

CMAlifts believes in putting people first. For that reason, we like to mould customers' needs into the perfect solutions for their projects. CMAlifts' highly skilled work method is the pivot around which both design and production stand out, through order management and on site delivery. No aspect of the business is outsourced (including logistics).

CMAlifts' progress has founded its ground basis on high quality products and attention to detail for customer's specific needs.



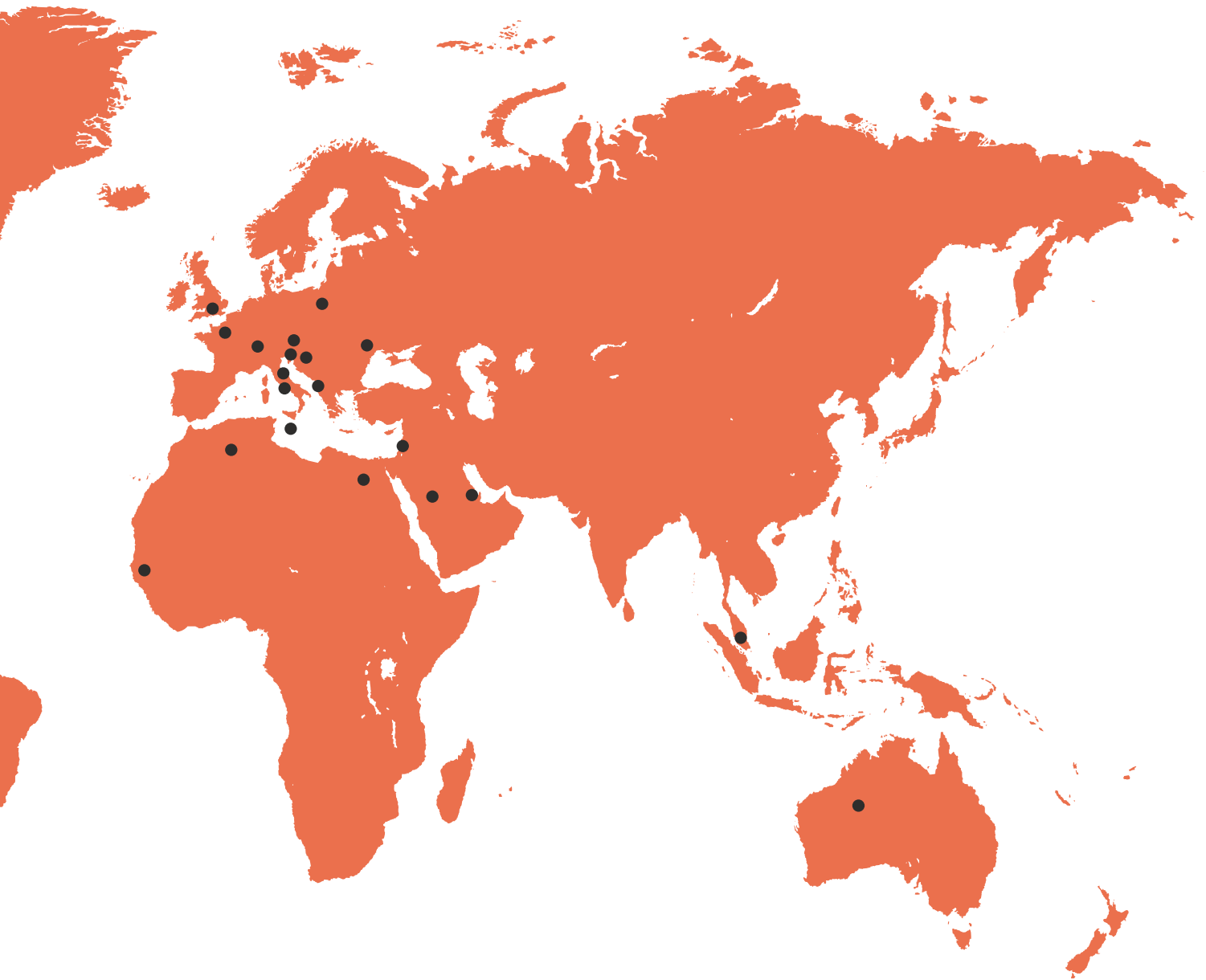




CMA, THE MARKETPLACE

CMAlifts' reference marketplace has no boundaries. Nowadays in society, the steady increase in urbanisation rates is creating a higher need for a vertical development in cities which, in turn, requires more sophisticated vertical mobility from the point of view of functionality and safety. CMAlifts' productivity has exponentially grown over the years in relation to the requirements of an increasingly demanding marketplace.

Our company is currently projecting towards a global marketplace in which it is challenged by the fulfilment of demands for top quality, aesthetic, functional, cutting-edge-technology products.



Italy
Republic of San Marino
United Kingdom
France
Switzerland
Austria
Poland
Slovenia
Croatia
Moldova
Albania

Malta
Senegal
Algeria
Egypt
Lebanon
Saudi Arabia
Qatar
Doha
Singapore
Australia



CMAlifts
GENERAL MANAGER
GIULIO CAPUTO

CMAlifts
General manager
Giulio Caputo

ITALIAELEVA



THE FAIRS

CMAlifts' reference marketplace has no boundaries. Deeply rooted into the Italian home market, CMAlifts has become today also a main player, a proven leading company in the Balkans and Northern Europe. No wonder, sales orders from abroad have in time been greater in number, also further to an increasingly widespread attendance at trade fairs of its sector.

In 2010, CMAlifts made its business "debut" at Lift 2010, a leading Italian trade fair of its sector.

Since then, its orange stand has increasingly been seen at all the most important industry fairs at an international level, shaking hands with an ever growing number of customers.

CMAlifts' first international trade fair attendance took place in 2013 at the "Interlift" in Augsburg, Germany. Since then, the company has paid greater attention to other prestigious trade fairs, as well, such as "Batimatec", based in Algiers, Algeria, and "Italia Eleva", Italy's inevitable trade appointment.



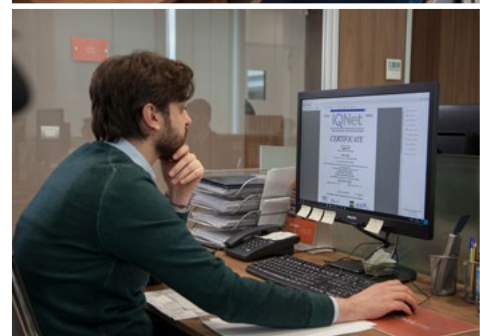
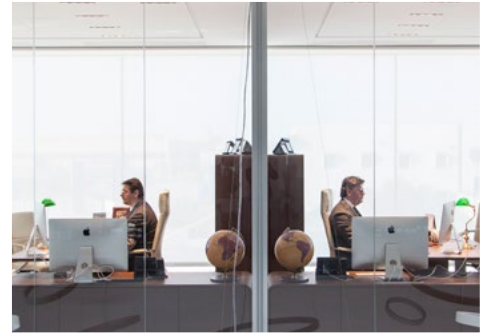


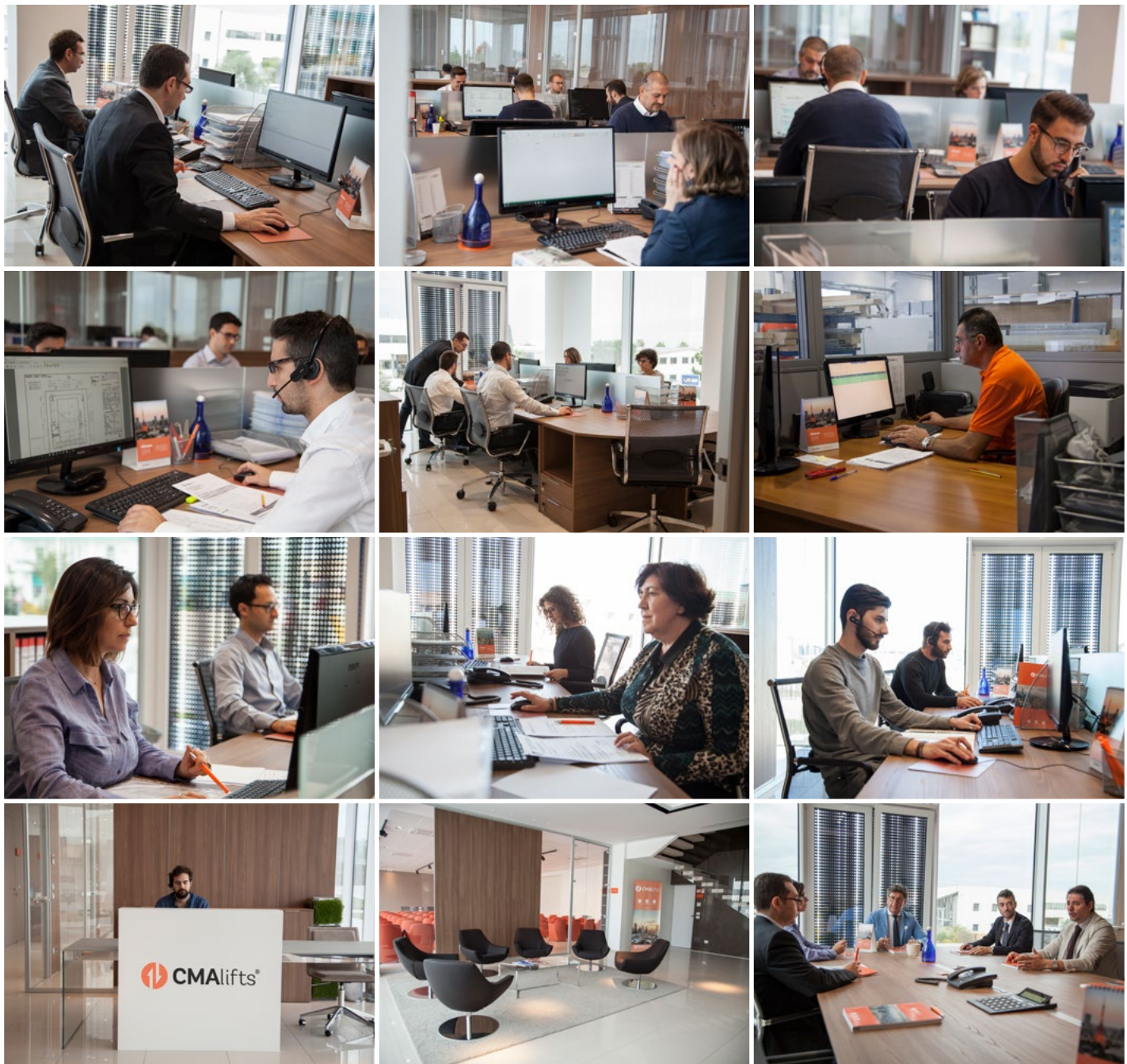
THE PEOPLE: OUR WORKFORCE

The secret of CMAlifts lies all in the group's strength. It is an industrial enterprise with the heart of a craftsman, which puts together futuristic high-tech solutions with the excellence and inventiveness of its employees.

This effort has been made in order to design a "tailor-made" product, which has received the most important certifications in the sector, in response to the needs of its customers all over the world. Fully aware of this complex international scenario, the company's choices have always sought to combine growth, ambition and dialogue with global trends, keeping an eye on national, as well as on local characteristics.

CMAlifts Headquarters are situated in Corato, Puglia, in the South-East of Italy. They encompass and coordinate the various organization's offices spread over the Italian territory. In Corato, the headquarters are the commercial, administrative, technical and strategic reference point. Here, a team of professionals offers real-time answers to a mechanism of production without respite. The decision to set up a true industrial pool was made on the basis of this principle: interaction, communication and growth among all the actors of this important, complex mechanism. First and foremost, the significance of a sales office, always aiming at expanding into new markets.





1 - General Manager

2 - Data Center

3 - Sales Dpt.

4 - Export Dpt.

5 - Research & Development

6 - Technical Office

7 - Purchase Dpt.

8 - Production Manager

9 - Logistics Dpt.

10 - Administration

11 - Certifications

12 - After Sales Service

13 - Management Systems Dpt.

14 - Reception

15 - Hall

16 - Meeting room

1 - Procurement

6 - Car frames

11 - Manual hinged doors

16 - Factory pan

2 - Laser hydraulic metal shears

7 - Brackets

12 - Cabins

17 - Warehouse

3 - Punch pressing machines

8 - Guide rails

13 - Car tops and bottoms

18 - Lift truck parking

4 - Hydraulic press brakes

9 - Cables

14 - Painting

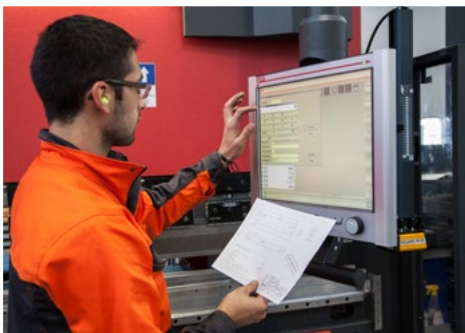
19 - Loading/Unloading

5 - Metal shaft structures

10 - Frames and sliding doors

15 - Packaging





The technical office is CMAlifts' high-tech brain. Thanks to the use of the most advanced machines and highly qualified personnel, it turns customer demands into projects, problems into solutions, and emergencies into prompt deliveries.

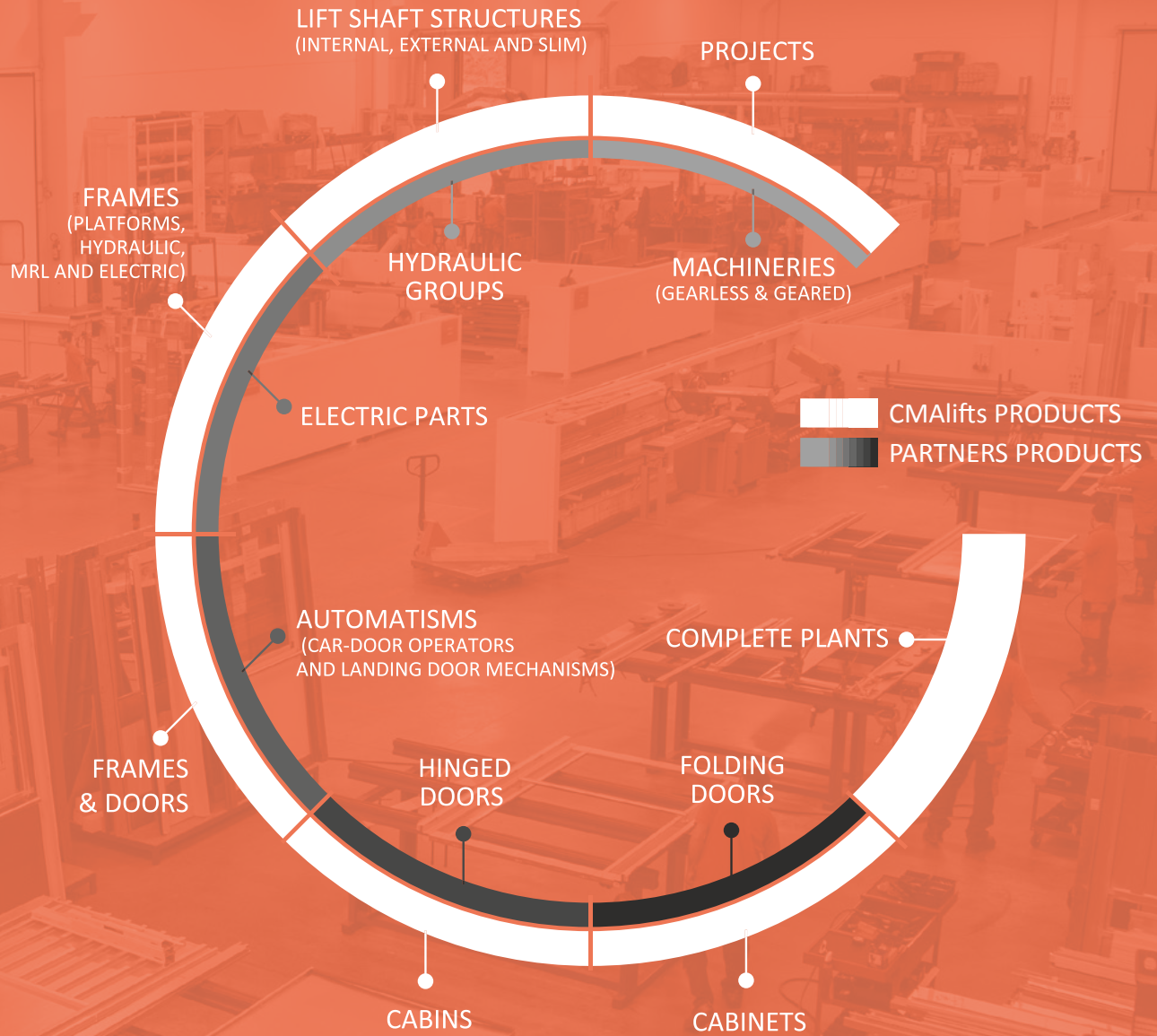
The purchasing office is responsible for the procurement of top-quality materials needed to supply the various production phases. Finally, CMAlifts' admin department manages all economic and financial resources, thus completing the picture of their efficient organisational structure.

Since 2010, CMAlifts has rolled out new offices in Italy, thus expanding their business influence in Rome, Naples, Palermo and Milan: a way to set up a strong, permanent business network in continuous development which meets customers' demands on a local, national and international bases.



PRODUCTION CHAIN, PRODUCT RANGE

CMAlifts PRODUCT RANGE



CMAlifts plants are the result of our own technical expertise in conjunction with a long manufacturing and assembly experience, which allows us to offer reliable complete products.



MODELLO
735 JR.
CANTO DA
Atela L. 1
PESO (kg)
2,915 kg
PRODOTTO DA
Ing. V. Tarantini
C.M.A. S.P.A.
ISTRUZIONI MONTACARICHI ASCENSORI
P. 238 Km 16,610 (ex Via Gravina)
73033 CORATO (BA) - ITALY



THE METHOD, THE STRATEGY

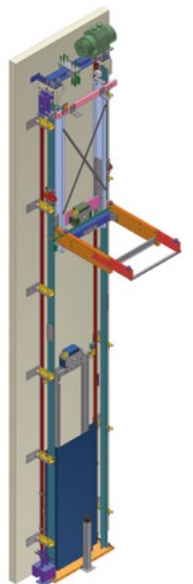
CMAlifts' highly skilled reliable and professional work method is the pivot around which both design and production stand out, through order management and on site delivery. No aspect of the business is outsourced (including logistics). The ambition and the dream of the brothers Giulio and Gaetano Caputo has led in time to initiate a special formula, an algorithm, an exceptional work method.

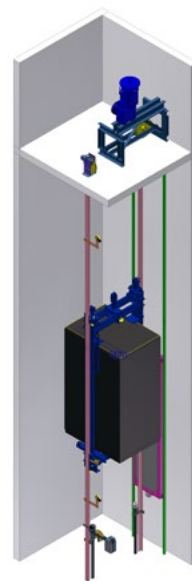
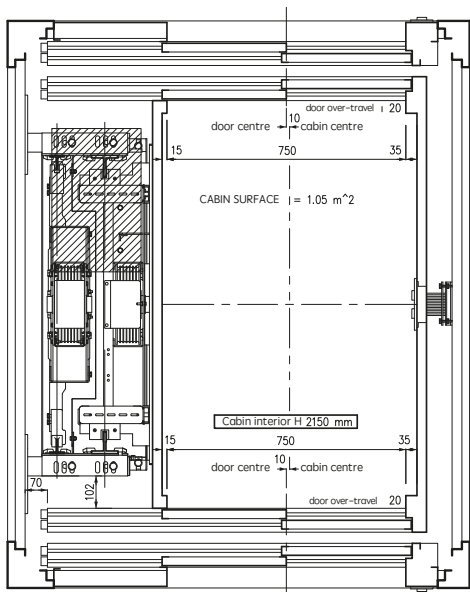
PRODUCT RANGE, CREATIONS

The company puts together every single phase of the industrial process in order to ensure 100% tailor-made products. All tools are equipped with computer systems which make every step of production perfectly connected with the schedule and the direction agreed with customers. CMAlifts is a well-timed clock.

Steel processing and all the subsequent assembly phases are coordinated by our Production Manager, Marco Caputo, who coordinates production and ensures that each delivery is perfectly met in time while keeping quality to an optimum level.

CMAlifts has banned all toxic, carcinogenic substances, basically those materials harmful to health. We strongly believe passion for employees is the ground basis of the strength of a company, where the organisation lays the foundations of its own positive energy.









METAL SHAFT STRUCTURES

CMAlifts offers its customers:

Self-supporting and/or non-self-supporting metal shaft structures, available in the slim version for narrow spaces, also suitable for existing buildings of historical or artistic value. The structures are available in hot-dip galvanized steel sheet for indoor, and coastal areas.

Infill realized in :

- PAINTED SHEET
- PLASTIC COATED SHEET
- STAINLESS STEEL
- INSULATION PANNELLING
- CRYSTAL (clear, bronze, smoked glass, milk, stop sol etc.)



PRODUCT LIST

- **Metal shaft structures for interior and exterior use (RAL, INOX)**
Standard, SLIM for Space saving, with external glass or binding screws.
Infill in painted metal sheet, skin-plate (plastic-coated sheet), stainless steel sheet, insulation panelling, in clear glass or upon request.
- **Hydraulic lift plants EN 81.2 - EN 81.20/50**
Rucksack type, rated load up to 2400 Kg.
Available range: central direct-acting - lateral direct-acting - indirect acting (or roping) 2:1
- **Energy efficient counterweighted plant**
Indirect acting 2:1, with rated load up to 375 Kg and 230 V single-phase, and rated load up to 900 Kg and 400 V three-phase.
- **Electric lifts with machine room EN 81.1 - EN 81.20/50**
Sling car frame, with rated load up to 2000 Kg and rated speed up to 2,5 m/sec.
Available range: direct acting - indirect acting 2:1 with upward/downward diverter pulley - Motor support supply.
- **MLR electric lifts EN 81.1- EN 81.20/50**
Direct acting, rucksack frame Pegaso NARROW with 440 mm. D.B.G. (rated load up to 320 kg and rated speed of 1m/sec.).
Direct acting, rucksack frame, Pegaso 1:1 (rated load up to 630 kg and rated speed of 1m/sec.).
Indirect acting, rucksack frame, Pegaso 2:1 (rated load up to 1250 kg and rated speed of 1m/sec.).
Indirect acting, sling frame, Pegaso DUE (rated load up to 2000 kg and rated speed of 2m/sec.).
- **EN 81.21 reduced pit, reduced overhead plants**
Hydraulic lifts: minimum pit of 200*mm, minimum overhead of 2400*mm (rated load up to 2000 Kg).
Electric lifts with machine room: minimum pit of 350*mm.
MRL electric lifts: minimum pit of 250*mm, minimum overhead of 2400*mm and rated load up to 800 kg.
- **Machinery Directive home-lifts 2006/42 EC**
Mercury: hydraulic home-lift (rated load up to 1000 kg and max rated speed of 0.15 m/s for EC plants and 0.3 m/s for non EC plants).
Febo: MRL electric home-lift (rated load up to 400 Kg and 0.5 KW; max rated speed of 0.15 m/s for EC plants and 0.3 m/s for non EC plants).
- **Refurbishment kit**
Kit Simplex: designed for the refurbishment of old electric lifts.
“Cabina Piuma”: a lightweight cabin, with panels in aluminium of 800 x 1200 mm, complete with door. WEIGHT 160 Kg.
- **Space saving lifts for narrow hoist-ways**
“Bridge” type hydraulic lift for an external shaft structure of 760 mm. MRL electric lift for an external structure of 850 mm. Hydraulic lift “400 mm D.B.G.”, for hoist-ways with an external structure of 660 mm.
MRL electric lift “Pegaso Narrow”, for hoist-ways with an external structure of 690 mm. MRL electric lift with a car frame space requirement of 235 mm. Hydraulic lift with a car frame space requirement of 180 mm.
- **Special Plants**
Panoramic lifts
Lifts for the food sector (AISI steel 316L)
Lifts for public transport (underground, subways, train stations)
Fire-fighters and rescue lifts (Italian M.D. 15/09/2005), Fire-fighters lifts (EN 81.72)

Cabins: standard - tailor-made - panoramic - special shape (upon request) and lightweight.
Landing doors, frames and surrounds (windowless, coated, framed glass and full glass)

* The measure indicated varies according to plant design specifications.

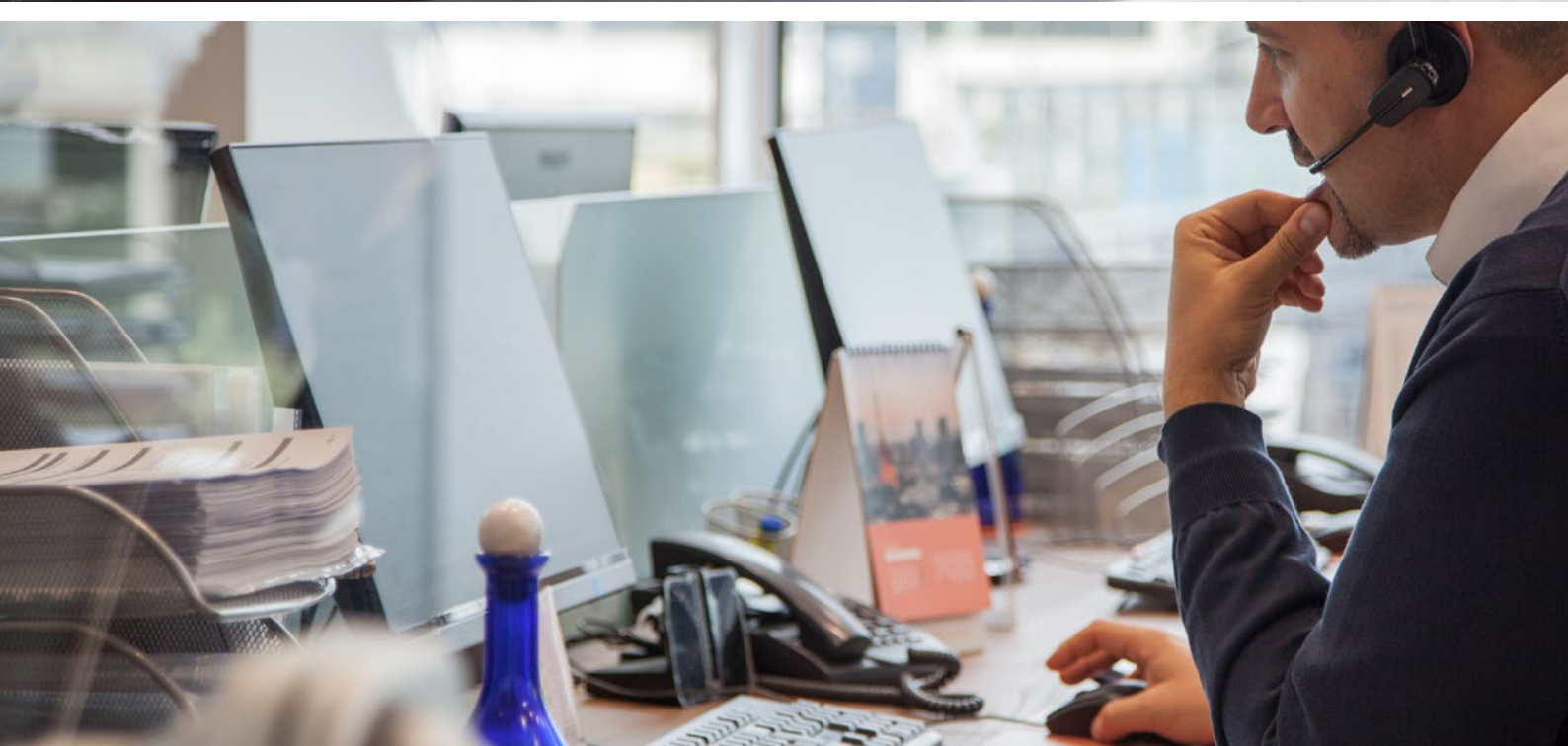
NB. The above plants are our standard range of products. For specific necessities, CMAlifts shall assess relevant project feasibility.
NB. All plants can be realized according to EN 81.70 – M.D. 236/89 (Law 13), and requested with 230V single-phase.



 CMAlifts®

**TAILOR-MADE
QUALITY
100% MADE IN ITALY**







OUR RELIABILITY

PRODUCTION

We are proud to say that CMAlifts was originally born as a real yard of ideas, rather than a manufacturing establishment, considering its strong dedication to research and investments in innovative customer oriented systems.

Quality and reliability: the two pillars on the basis of which a company constantly seeks to improve, through the implementation of products at the forefront of technology. Both the design and production phases are based on the use of the latest 3D CAD tools and modern CNC machines. CMAlifts is a green company, perfectly integrated into the environment, at the forefront of green production through the use of photovoltaic panels, 14001 and EMAS (Eco-Management and Audit Scheme) certifications and the use of recycled materials.

LOGISTICS

CMAlifts likes to reduce the distances taking care of all aspects of the delivery, animating production and transport activities all about customer's needs.

CMAlifts can rely on a solid fleet of own vehicles (articulated lorries, trucks, and special vans all equipped with tail lifts) which allow our company to be closer to the people who strongly believe in sharing a project, with the guarantee of a fast and punctual delivery, thanks to a new generation of integrated logistics system. As a matter of fact, the optimization of the company's productivity is based on an effective coordination of the phases of supply, production and delivery, both nationally and internationally.

ASSISTANCE

CMAlifts is available to its customers at all times. Users can use a web portal which offers the possibility of not only tracking orders in real time, but also of downloading certificates, projects and other plant technical reports (besides projects and technical report concerning metal shaft structures).





SHOWROOM

DATA CENTER

In order to optimize production activities, CMAlifts has implemented an ERP system which ensures a highly efficient coordination of supply, production and delivery phases.

Customer relations are managed by a Customer Relationship Management (CRM) system which ensures cutting-edge performance. CMAlifts furthermore uses an in-house Data Center (DC), responsible for a wide variety of software development and maintenance management. CMAlifts' DC department is managed by a group of software developers all holding a degree in Information Technology, and one system administrator. Customers can also make use of a web portal which allows to get real-time information about orders, products and technical aspects.

In particular, customers can:

- download the tender / order forms in conjunction with all our products
- track existing orders
- download and consult certificates, as well as download projects and relevant technical dossiers for metal shaft structures.









SOLIDARITY

SOCIAL COMMITMENTS, SPORTS

CMAlifts has based its project on the significance and the importance of people. A great success involves great responsibilities. That's why CMAlifts, for years, has returned this trust by investing in research projects designed to give a smile to those who need it most. In particular, it supports the association "Gocce nell'Oceano" and A.F.F.D.A, (Disabled Children Families' Association). Furthermore, CMAlifts firmly believes in the educational

value of sports, especially among young people. That's why the company is the official sponsor of basketball, football and the Ryugi Karate sports associations. Within a context of global responsibilities, CMAlifts is actively taking part in the WORLD COMMUNITY GRID project supporting research through allocating its own unused computing resources for projects in areas such as health and the environment.



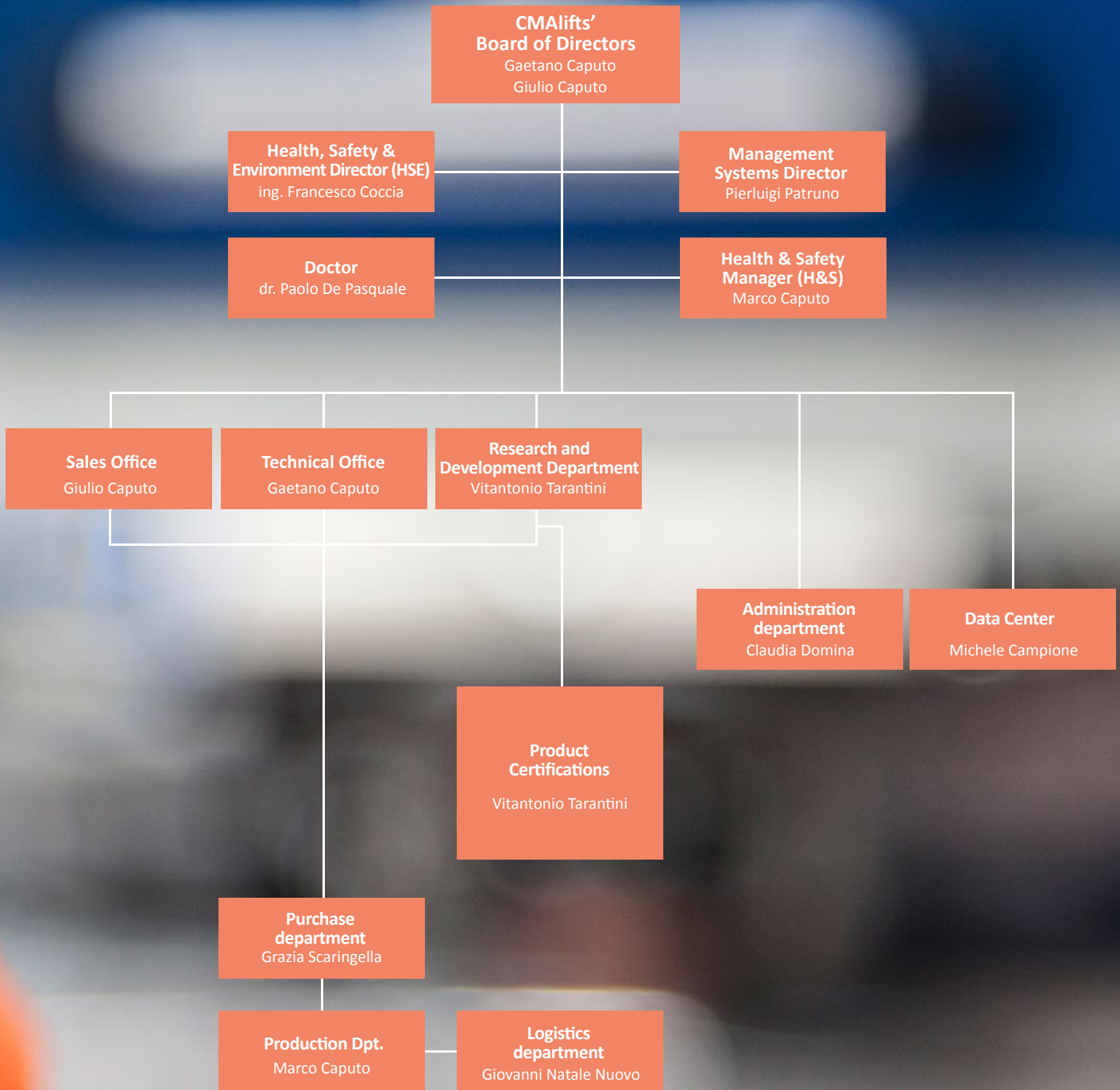
Associazione Famiglie di Figli Diversamente Abili "UNISCITI A NOI"





 CMAAifts®

RESPONSIBILITIES, CERTIFICATIONS



CMAlifts is an ISO 9001: 2015, ISO 14001: 2015, OHSAS 18001: 2007 certified company, with the CE marking for metal structures according to EN 1090-1: 2009 + A1: 2011 with FPC 1370-CPR-1419 regulations.



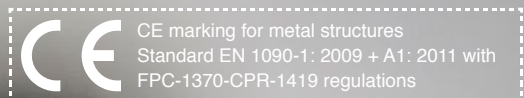
ISO 9001:2015



ISO 14001:2015



OHSAS 18001:2007





Gaetano Caputo
n.caputo@CMAlifts.com

Giulio Caputo
g.caputo@CMAlifts.com

Administration
amministrazione@CMAlifts.com

Certifications
certificazioni@CMAlifts.com

Technical Office
tecnico@CMAlifts.com

Production Department
produzione@CMAlifts.com

Research & Development Department
progettazione@CMAlifts.com

Logistics
logistica@CMAlifts.com

Purchase Department
acquisti@CMAlifts.com

Quotations
vendite@CMAlifts.com

Data Center
informatico@CMAlifts.com

info@CMAlifts.com

Partner





C.M.A. S.r.l.
S.P. 238 Km 11,728 - 70033 Corato (BA) - Italy
TEL. +39 080.3588714 - FAX + 39 080.8729113
INFO@CMALIFTS.COM - INFO@PEC.CMALIFTS.COM
CMALIFTS.COM